

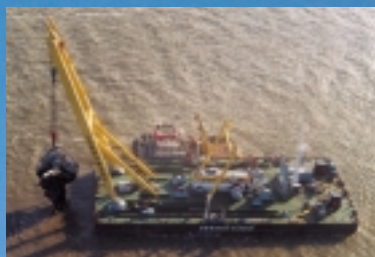
contact details

Multraship Salvage BV
Scheldekade 48
4531 EH Terneuzen
The Netherlands

Tel: +31 115 645000
Fax: +31 115 645001
E-mail: salvage@multraship.nl

photo's © Multraship & CEDE Photoservices
design: allaboutcat@zonnet.nl

www.multraship.nl



floating sheerlegs **CORMORANT**

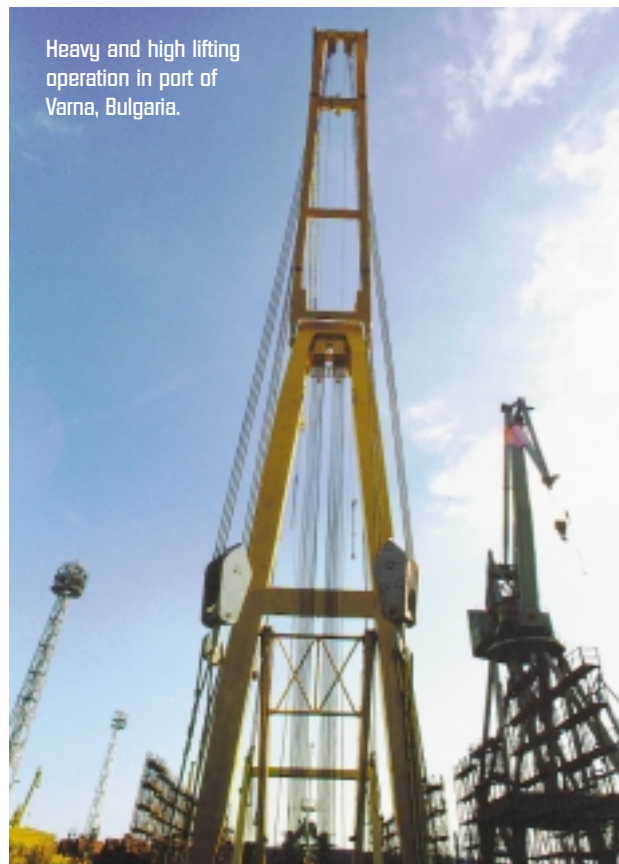


Cormorant is a self-propelled seagoing sheerlegs, with a 400 tonne lifting capacity. Fully overhauled in 1999, Cormorant is highly suitable for marine salvage and wreck removal and all kinds of inshore and offshore lifting operations.

Cormorant is equipped with 2 main hooks with a capacity of 200 tonnes each, with a maximum lifting height of 30 metres. Fitted with a 300 tonne capacity Wreck Grab and a 50 m³ Bucket Grab, Cormorant is ready to be employed in operations world-wide. The jib enables Cormorant to lift weights with her auxiliary hooks, up to 200 tonnes, to a height of 45 metres.

Cormorant's capability and experienced crew make her ideal for:

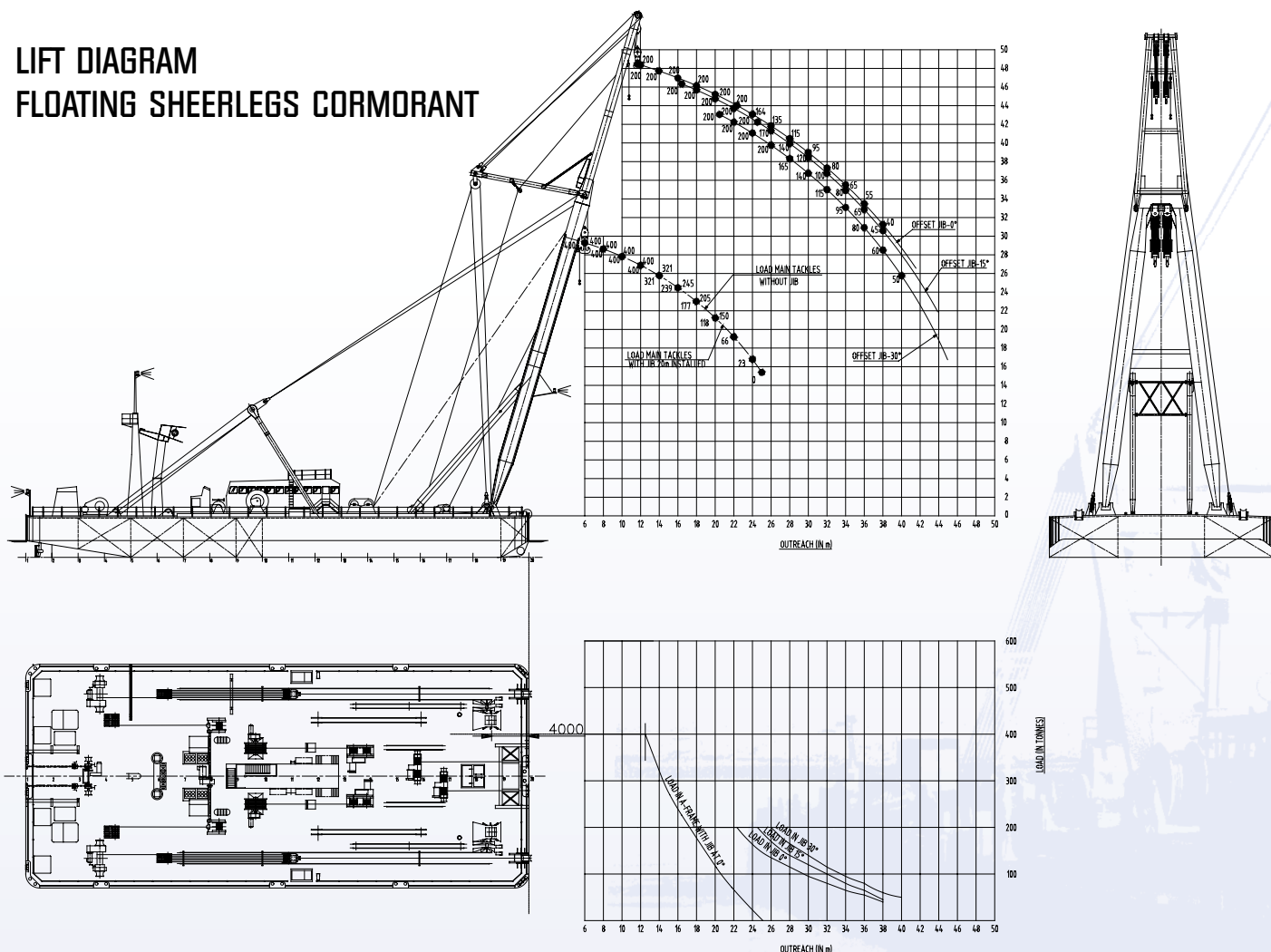
- Marine salvage
- Wreck removal
- Loading and unloading heavy structures
- Offshore
- Shipbuilding
- Marine civil construction



Heavy and high lifting operation in port of Varna, Bulgaria.

FLOATING SHEERLEGS CORMORANT

LIFT DIAGRAM FLOATING SHEERLEGS CORMORANT



Technical Specifications

General Particulars

| | |
|----------------------|-----------------------|
| Vessel name | Cormorant |
| Call sign | PCHJ |
| Classification | Germanischer Lloyd |
| Flag | Dutch |
| Port of Registry | Terneuzen-Netherlands |
| Year of construction | 1973 |
| Overhauled | 1999 |

Dimensions

| | |
|----------------|--------------|
| Length | 54,00 metres |
| Beam | 23,96 metres |
| Min. draft | 2,70 metres |
| Max. draft | 3,68 metres |
| Min. air-draft | 8.75 metres |
| Max. air-draft | 60,00 metres |

| | |
|---------------|--------------|
| Gross tonnage | 1,505 tonnes |
| Nett tonnage | 451 tonnes |

Accommodation

20 persons, fully heated and air-conditioned

Operation area

Worldwide

Propulsion

4 x 255 Hp Deutz BF 6, M-716 U,
driving 4 Schottel rudder propellers

Bow thruster

150 Hp Schottel /S-100-ZL

Deck Load

5 T/m²

Mooring winches

| | |
|---------|---|
| Aft | 2 |
| Forward | 2 |

Anchor winches

Aft: 2,150 Kg. with 196 metres of chain

Grabs

| | |
|-------------|---------------------|
| Wreck Grab | 300 tonnes capacity |
| Bucket Grab | 50 m ³ |

Lifting capacity

| |
|---|
| 400 (2x 200) tonnes main tackle |
| 200 (2x 100) tonnes top tackle (flying jib) |
| 400 (2x 200) tonnes deck tackle |
| 20 (2 x 10) tonnes auxiliary tackle |

Generator plant

| | |
|-----------|-----------------------|
| Main | 2 x 190 KVA, 380 Volt |
| Auxiliary | 1 x 95 KVA, 380 Volt |
| | 1 x 22 KVA, 380 Volt |

Various

- Wheelhouse equipped for independent navigation at sea
- GMDSS, 2 radars, Gyro, GPS, DGPS, depth sounder, speed log
- 2 VHF sets/MF/HF
- 2 ballast pumps of 250m³/hour
- Workboat
- Workshop with welding and cutting gear
- Electric, submersible salvage pumps
- Diving equipment including underwater cutting and welding gear

Cormorant is operated by Multraship Salvage BV, a division of the Muller Maritime Group, based in Terneuzen, The Netherlands.

The main activities of the Muller Maritime Group are:

- Worldwide salvage and wreck removal
- Harbour towage in the Flushing and Terneuzen/Ghent areas
- River & deep sea towage
- Services to dredging, marine contracting & offshore industries
- Tug management
- Brokerage

The company, which is a member of the International Salvage Union, operates a large fleet of tugs, salvage craft and multi-purpose support vessels. It has a pool of experienced salvage masters and crew and has wide experience with complex wreck removal operations. Multraship handles dozens of dry and wet salvage operations each year involving all types of vessels including casualties which present a pollution or environmental threat.

Multraship has implemented a total quality & safety management system and is ISO 9002, ISM and VCA (Dutch safety) certified.



Wreck piece recovered during deepening of Western Scheldt



Recovery of sunken pusher tug in port of Antwerp, Belgium