

**MULTRASHIP**

**Multi-Purpose/Diving-Support/Oil-Recovery/Salvage and Survey Vessel**

## **MULTRASHIP COMMANDER**



The "MULTRASHIP COMMANDER" is Multraships new, state-of-the-art oil-combat/multi-purpose/anchor-handling/towing/salvage and survey vessel for world-wide operations. The vessel can be employed in a number of roles in the offshore-, survey- and installation industry and for salvage and (oil) pollution recovery operations and rescue towages.

The modern spacious quarters of the "MULTRASHIP COMMANDER" will accommodate up to 14 + 8 provisional charterers' personnel in single and double cabins. An office, two mess rooms and one saloon provide ample working space.

The large free deck area is equipped with deck fittings for containerised charterers additional equipment of which the forward end is well protected by the extended deck-house accommodation on port and starboard side.

## General information

Owner :	Multraship, Terneuzen
Design/Builder :	Damen shipyards
Year of construction:	1982
classification :	Dutch Shipping Inspectorate
Flag :	Dutch
Main dimensions :	Length o.a. : 56.34 m
	Length b.p. : 52.50 m
	Breadth mld: 11.50 m
	Depth : 5.00 m
	Draught : 3.50 m
Gross/Net tonnage :	991/297 tons
Maximum displacement :	1223 tons
Free deck space :	250 m <sup>2</sup>
Minimum service speed :	1 - 4 knots
Maximum service speed :	12.2 knots
Tank capacities :	fuel : 190 m <sup>3</sup>
	pot. Water : 49 m <sup>3</sup>
	ballast water : 493 m <sup>3</sup>
	recovery oil : 214 m <sup>3</sup>
	anti-rol tank : 38 m <sup>3</sup>



## Main propulsion :

- two SWD engines, 370 kW each, driving 2 CP propellers
- one 350 kW SWD engine, 350 kW, azimuth CP propeller
- bow thruster: 468 kW CP propeller tunnel thruster

## Auxiliary engines :

- one Deutz diesel engine, driving bow thruster generator
- three DAF 144 kW diesel generators, 380/220V, 50 HZ
- Low voltage power supply:
  - 220 V no-break power supply 25 kVA (stabilized)
  - 24 V
- Compressor : Atlas Copco, 7 bar

## Accommodation :

- Captain and crew: 8 single cabins; 1 double cabins
- Charterers' personnel: 4 single cabins; 4 double cabins
- Survey/sonar-room
- office
- combined survey-room/wheelhouse on the bridge deck
- machine and boatswain workshop
- salvage equipment hold, pumps, generators, welding and cutting gear

## Safety equipment :

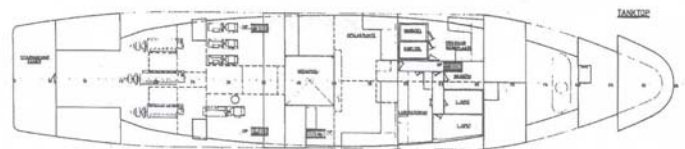
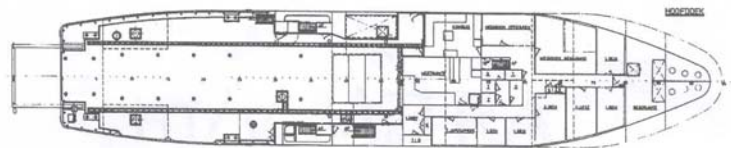
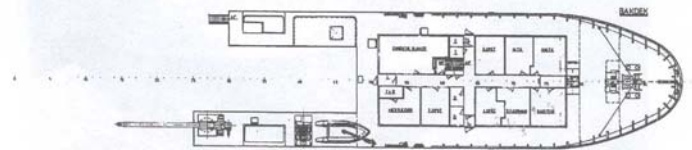
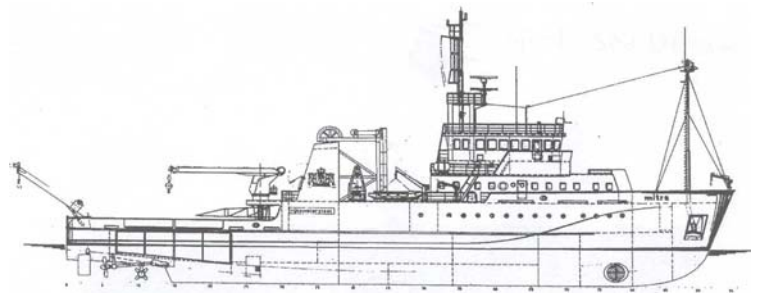
- 2 x 25 persons life rafts
- Rigid inflatable MOB assistance boat with 18 kW outboard engine

## Deck equipment:

- Hydraulic A-frame : SWL 5 tons, lifting height 7 m above main deck
- Moonpool crane : SWL 30 tons (double reeve) SWL 15 tons (single reeve)
- Telescopic crane : SWL 5 tons at 12 m outreach; SWL 10 tons at 6m outreach double reeve
- Capstan/hauling winch : 5 tons Anchor winch (electric), 5 tons at 15 m/min
- Anchors : 2 High holding anchors 855 kg each, chain length 6/7 shackles
- Container fittings : for 10 ft, 20 ft and 30 ft containers
- Moon pool: 3.8 x 3.8 meter

## Navigation and Communication equipment :

- Positioning system : 2x Differential GPS, Sercel NR-103 receiver
- Side scan sonar
- Autopilot : Plath
- Magnetic compass : Observator
- Gyro compass : Robertson SKR 82
- Echo sounder : Elac EL-4242
- Radar Furuno ARPA FAR-2822  
Furuno 1505 DA:
- Speedometer : BEN, Galatee 400 + 2 remote displays
- VHF : Skanti TRP 3000, TRP 2500 NL, TRP 300  
Portable VHF : Navico SRH250, GMDSS
- Wireless telephony : Sailor Compact 2100/HF
- Communication bridge/deck/engine room: Open-loop intercom system (20 stations)



## Upgrading :

- The "MULTRASHIP COMMANDER" will be upgraded with:
- Double drum Anchor handling towage winch including wild cat.
  - Stern roller
  - Open stern configuration
  - Four-point mooring system
  - Complete surface demand diving system including decompression chamber